



mersa
Hidrolik Makina San. ve Tic.Ltd.Şti.

Ms. 150



Teknik Özellikler

1. Yüksek mukavemetli, burkulmaya dayanıklı ÇELİK ŞAŞI
2. Yüksek mukavemetli, burkulmaya dayanıklı altıgen kesitli Weldox 700 veya muadili ÇELİK BOMLAR
3. f7 toleransında CK45 malzemeden, noktada 50 mikron KROM KAPLI MİL,
4. Dikişsiz H8 toleransında honlanmış ST-52 çelik çekme borulardan ÇİFT TESİRLİ HİDROLİK SİLİNDİRLER
5. Isıl işleme tabi tutulmuş ve taşlanmış, mafsal yerleri bronz yataklarla yataklanmış PERNOLAR
6. Maksimum yükte güvenle çalışma sağlayan ayak açıklıkları, şok yüklerle karşı ikiz kilit valfleri
7. Bomlar arasında aşınmayı ve sürtünmeyi azaltan ayarlanabilen kestamit yataklamalar
8. Hidrolik malzemelerin tamamı ithal olup vincin emniyetli çalışması için yük tutma ve basınç emniyet valfeleri
9. Yüksek basınç ve sıcaklığa dayanıklı, PÜ malzemeden sızdırmazlık ekipmanları
10. Kramayer dişlili veya çember dişlili dönüş sistem
11. Sistem çalışırken ısınmaya meydan vermeyecek kapasitede bir yağ tankı ve tankın üzerinde emiş ve geri dönüş filtresi
12. Bilgisayar ortamında analiz desteği ile doğru ve güvenilir tasarım
13. CE ve ISO 9001-2008 Kalite Standartlarında Üretim




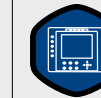






Technical Specifications

1. High resistance, torsionally strong STEEL CHASSIS
2. High resistance, torsionally strong hexagon cross-sectioned Weldox 700 or equivalent STEEL BOOMS
3. f7 tolerance CK material, 50 micron per point CHROME COATED MILL
4. DOUBLE EFFECT HYDRAULIC CYLINDERS of ST-52 steel seamless pipes honed at H8 tolerance
5. PIVOT PINS subjected to heat process and stoned, with joints bedded with bronze beds
6. Feet distances providing for safe operation at maximum load, double lock valves against shock loads
7. Adjustable casternid bearings that lower wear and friction between booms
8. Hydraulic materials are all import and there are load catching and pressure safety valves
9. PU material sealing equipment resistant to pressure and temperature
10. Rack and pinion or recirculating ball turning system
11. A high capacity oil tank that would prevent overheating during system operation and a sucking and returning filter on the tank
12. Correct and reliable design with analysis support in computer environment
13. CE and ISO 9001-2008 Quality Standard Manufacturing

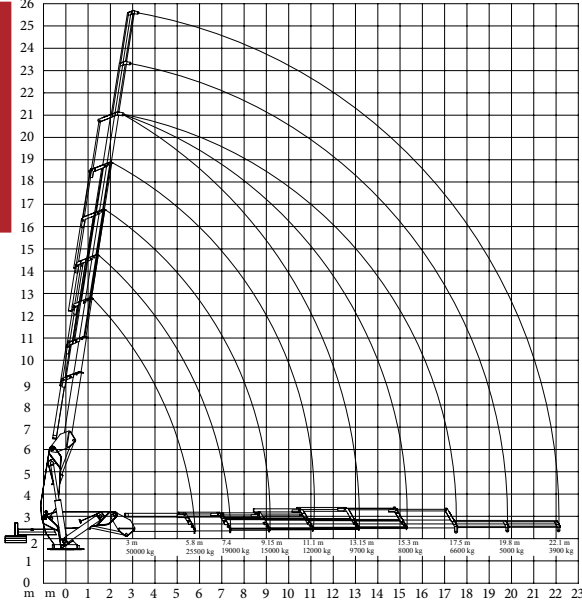
STANDART / Standard

				
Kanca Hook	Mekanik Bom Mechanical Boom	Dönüş Açısı Turning Angle	Hidrolik Yağ Tankı Hydraulic Oil Tank	Koltuk Seat

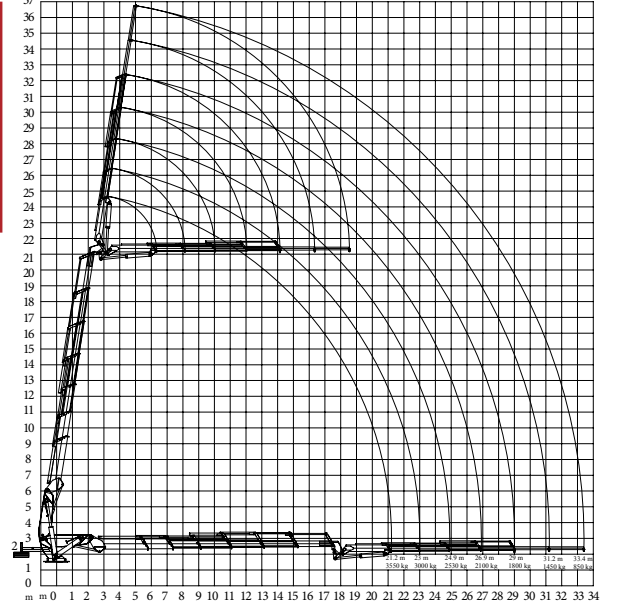
OPSİYONEL / Optional

									
Halat Tamburu Rope Pulley	Çift taraflı Kumanda Double Sided Control	İlave Kumanda Dilimi Extra Control Slot	Alan Kontrol Area Control	İlave Mekanik Bom Extra Mechanical Boom	İnsan Sepeti Human Basket	Moment Kontrol Moment Control	Yağ Soğutucu Oil Cooler	Uzaktan Kumanda Remote Control	Operatör Kabini Operator Cabin

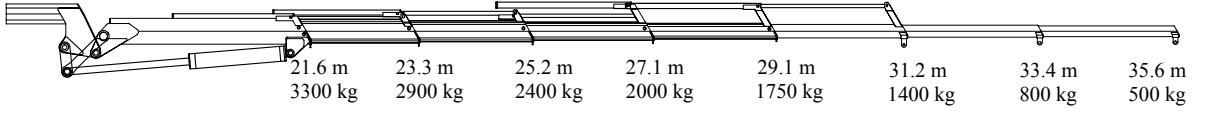
Ms. 1506K



Ms. 1506K+K4



Ms. 1506K+K5



TR	EN		Ms.1505K	Ms.1506K
Kaldırma Momenti	Lifting Moment	Ton/m	150	150
Max. Kaldırma Kapasitesi	Max Lifting Capacity	kg	50000	50000
Çalışma Basıncı	Working Pressure	bar	250	250
Hidrolik Bom Sayısı	Number of Hydraulic Booms	adet	5	6
Max. Hidrolik Uzanma Mesafesi	Max. Hydraulic Reach	m	15.15	17.5
Mekanik Bom Sayısı	Number of Maneul Booms	adet	2	2
Max. Mekanik Uzanma Mesafesi	Max. Manuel Reach	m	19.75	22.1
Dönüş Açısı	Slewing Angle	(°)	∞	∞
Max Çalışma Açısı	Max. Working Angle	(°)	80	80
Max. Ayak Açıklığı	Outrigger Reach	m	9.4	9.4

