



mersa
Hidrolik Makina San. ve Tic.Ltd.Şti.

Ms. 60



Teknik Özellikler

1. Yüksek mukavemetli, burkulmaya dayanıklı ÇELİK ŞASI
2. Yüksek mukavemetli, burkulmaya dayanıklı altıgen kesitli Weldom 700 veya muadili ÇELİK BOMLAR
3. f7 toleransında CK45 malzemeden, noktada 50 mikron KROM KAPLI MİL,
4. Dikişsiz H8 toleransında honlanmış ST-52 çelik çekme borulardan ÇİFT TESİRLİ HİDROLİK SİLİNDİRLER
5. Isıl işleme tabi tutulmuş ve taşlanmış, mafsal yerleri bronz yataklarla yataklanmış PERNOLAR
6. Maksimum yükte güvenle çalışma sağlayan ayak açıklıkları, şok yüklere karşı ikiz kilit valfleri
7. Bomlar arasında aşınmayı ve sürtünmeyi azaltan ayarlanabilen kestamit yataklamalar
8. Hidrolik malzemelerin tamamı ithal olup vincin emniyetli çalışması için yük tutma ve basınç emniyet valfeleri
9. Yüksek basınç ve sıcaklığa dayanıklı, PÜ malzemeden sızdırmazlık ekipmanları
10. Kramayer dişlili veya çember dişlili dönüş sistem
11. Sistem çalışırken ısınmaya meydan vermeyecek kapasitede bir yağ tankı ve tankın üzerinde emiş ve geri dönüş filtresi
12. Bilgisayar ortamında analiz desteği ile doğru ve güvenilir tasarım
13. CE ve ISO 9001-2008 Kalite Standartlarında Üretim







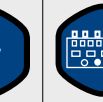



Technical Specifications

1. High resistance, torsionally strong STEEL CHASSIS
2. High resistance, torsionally strong hexagon cross-sectioned Weldom 700 or equivalent STEEL BOOMS
3. f7 tolerance CK material, 50 micron per point CHROME COATED MILL
4. DOUBLE EFFECT HYDRAULIC CYLINDERS of ST-52 steel seamless pipes honed at H8 tolerance
5. PIVOT PINS subjected to heat process and stoned, with joints bedded with bronze beds
6. Feet distances providing for safe operation at maximum load, double lock valves against shock loads
7. Adjustable castermid bearings that lower wear and friction between booms
8. Hydraulic materials are all import and there are load catching and pressure safety valves
9. PU material sealing equipment resistant to pressure and temperature
10. Rack and pinion or recirculating ball turning system
11. A high capacity oil tank that would prevent overheating during system operation and a sucking and returning filter on the tank
12. Correct and reliable design with analysis support in computer environment
13. CE and ISO 9001-2008 Quality Standard Manufacturing

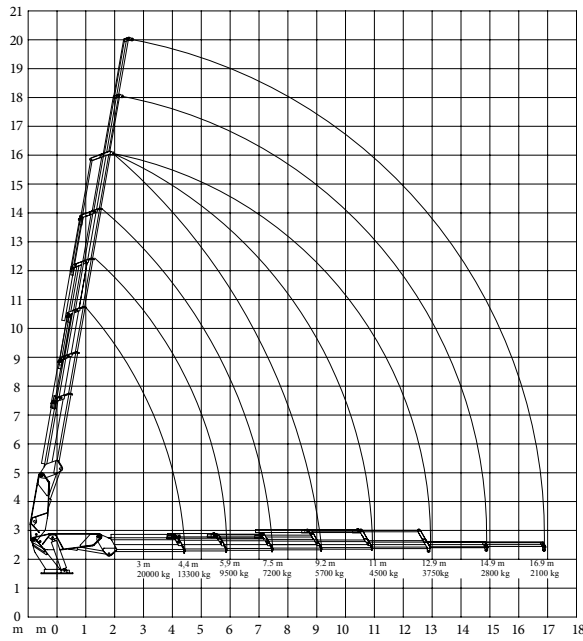
STANDART / Standard

				
Kanca <i>Hook</i>	Mekanik Bom <i>Mechanical Boom</i>	Dönüş Açısı <i>Turning Angel</i>	Hidrolik Yağ Tankı <i>Hydraulic Oil Tank</i>	Koltuk <i>Seat</i>

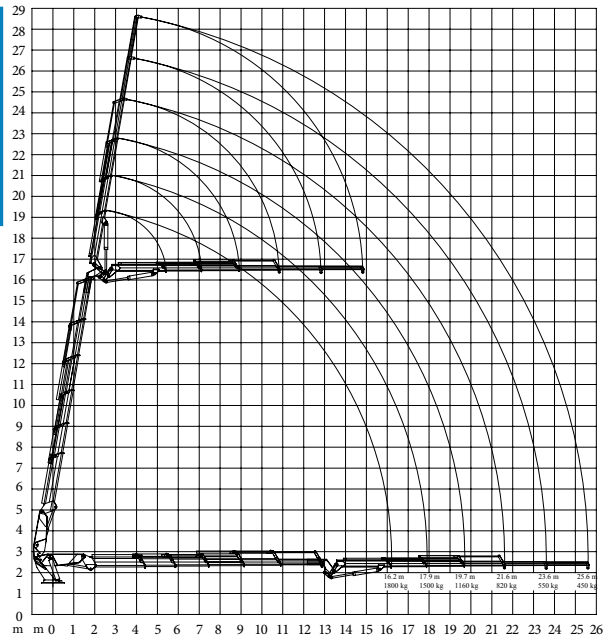
OPSİYONEL / Optional

									
Halat Tamburu <i>Rope Pulley</i>	Çift taraflı Kumanda <i>Double Sided Control</i>	İlave Kumanda Dilimi <i>Extra Control Slot</i>	Alan Kontrol <i>Area Control</i>	İlave Mekanik Bom <i>Extra Mechanical Boom</i>	İnsan Sepeti <i>Human Basket</i>	Moment Kontrol <i>Moment Control</i>	Yağ Soğutucu <i>Oil Cooler</i>	Uzaktan Kumanda <i>Remote Control</i>	Operatör Kabini <i>Operator Cabin</i>

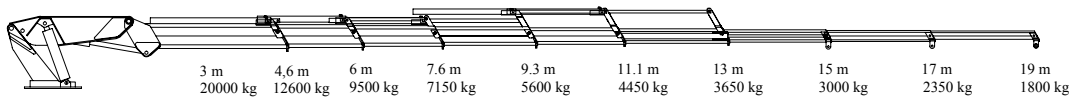
Ms. 605 K



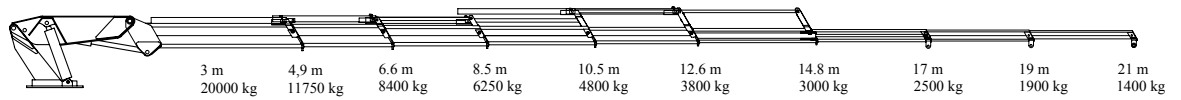
Ms. 605K+K3



Ms. 606 K



Ms. 606 L



TR	EN		Ms.605K	Ms.606K	Ms.606L
Kaldırma Momenti	Lifting Moment	Ton/m	60	60	60
Max. Kaldırma Kapasitesi	Max Lifting Capacity	kg	20000	20000	20000
Çalışma Basıncı	Working Pressure	bar	250	250	250
Hidrolik Bom Sayısı	Number of Hydraulic Booms	adet	5	6	6
Max. Hidrolik Uzanma Mesafesi	Max.Hydraulic Reach	m	12.9	15	17
Mekanik Bom Sayısı	Number of Maneul Booms	adet	2	2	2
Max. Mekanik Uzanma Mesafesi	Max. Manuel Reach	m	16.9	19	21
Dönüş Açısı	Slewing Angle	(°)	∞	∞	∞
Max Çalışma Açısı	Max. Working Angle	(°)	80	80	80
Max. Ayak Açıklığı	Outrigger Reach	m	7.3	7.3	7.3

